

КАТАЛОГ

на оборудование MAZHAOLI



Архангельск (8182)63-90-72
Астана (7172)727-132
Астрахань (8512)99-46-04
Барнаул (3852)73-04-60
Белгород (4722)40-23-64
Брянск (4832)59-03-52
Владивосток (423)249-28-31
Волгоград (844)278-03-48
Вологда (8172)26-41-59
Воронеж (473)204-51-73
Екатеринбург (343)384-55-89
Иваново (4932)77-34-06

Ижевск (3412)26-03-58
Иркутск (395)279-98-46
Казань (843)206-01-48
Калининград (4012)72-03-81
Калуга (4842)92-23-67
Кемерово (3842)65-04-62
Киров (8332)68-02-04
Краснодар (861)203-40-90
Красноярск (391)204-63-61
Курск (4712)77-13-04
Липецк (4742)52-20-81
Киргизия (996)312-96-26-47

Магнитогорск (3519)55-03-13
Москва (495)268-04-70
Мурманск (8152)59-64-93
Набережные Челны (8552)20-53-41
Нижний Новгород (831)429-08-12
Новокузнецк (3843)20-46-81
Новосибирск (383)227-86-73
Омск (3812)21-46-40
Орел (4862)44-53-42
Оренбург (3532)37-68-04
Пенза (8412)22-31-16
Россия (495)268-04-70

Пермь (342)205-81-47
Ростов-на-Дону (863)308-18-15
Рязань (4912)46-61-64
Самара (846)206-03-16
Санкт-Петербург (812)309-46-40
Саратов (845)249-38-78
Севастополь (8692)22-31-93
Симферополь (3652)67-13-56
Смоленск (4812)29-41-54
Сочи (862)225-72-31
Ставрополь (8652)20-65-13
Казахстан (772)734-952-31

Сургут (3462)77-98-35
Тверь (4822)63-31-35
Томск (3822)98-41-53
Тула (4872)74-02-29
Тюмень (3452)66-21-18
Ульяновск (8422)24-23-59
Уфа (347)229-48-12
Хабаровск (4212)92-98-04
Челябинск (351)202-03-61
Череповец (8202)49-02-64
Ярославль (4852)69-52-93



ABOUT US

Mazhaoli (Guangdong) Technology Co., Ltd. is a modern enterprise focusing on the production of cleaning equipment, integrated product development, manufacturing, sales and after-sales service. The R&D team combines many years of marketing research and design experience, draws on domestic and overseas advanced production technology, incorporates modern design concepts and intelligent operating systems, developed high quality scrubbers and sweepers that are easy to operate. The high quality products are popular in domestic and abroad.

Adhering to the belief of "survive by quality and development by science and technology", the company strives to create first-class modern cleaning equipment to make cleaning work easy and fun! We sincerely hope to cooperate with clients from all parts of the world and work together to maintain a high quality environment for our lives and work, We stand for quality and service



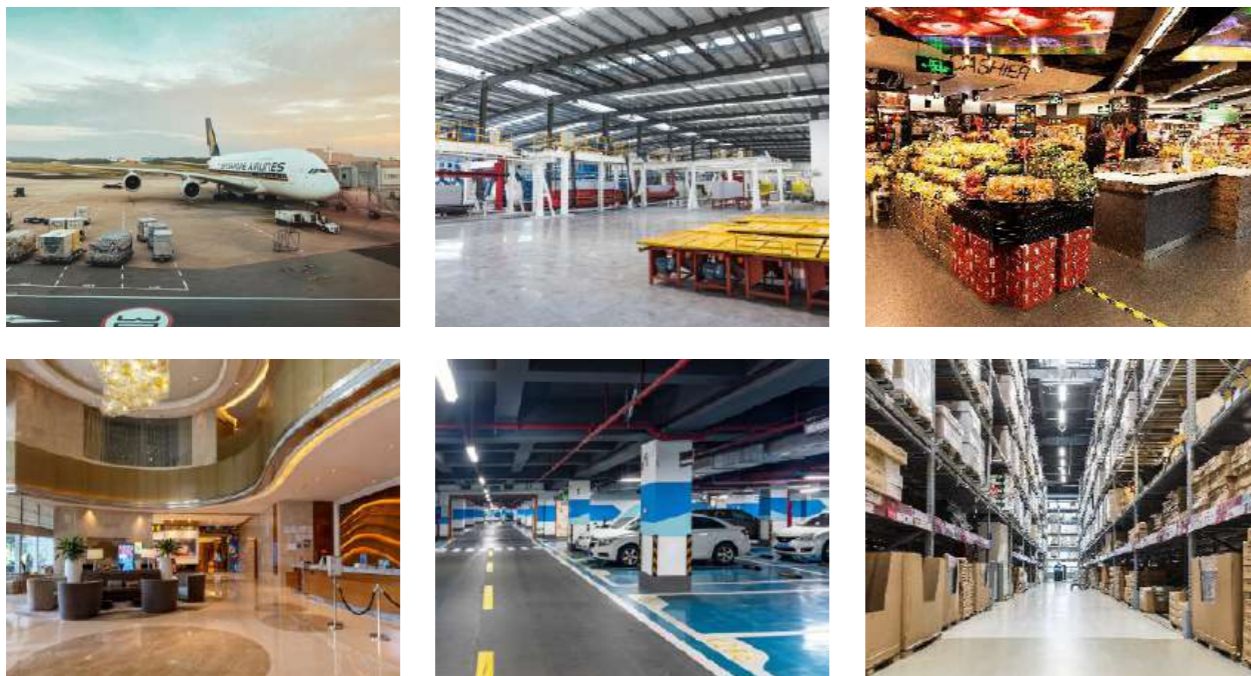
MAZHAOLI TECHNOLOGY

Adhering to the "good faith, mutual benefit and win-win" business philosophy
 Adhere to the quality policy of "excellent quality, development and progress, innovation and creation, and create the future together"
MUTUAL BENEFIT AND WIN-WIN
 [ADVANCED DESIGN CONCEPT, INTELLIGENT OPERATION]

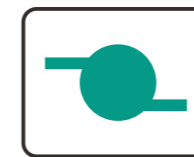
MAKE CLEANING EASIER
 MAKE YOUR ENVIRONMENT MORE COMFORTABLE

Mazhaoli floor cleaning equipment for every place

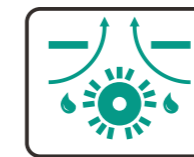
Airport / Production workshop / Storage warehouse / Subway platform / Exhibition hall / Shopping mall
 Office hall / Medical Hospital / Parking Plaza / Business hotel / Supermarke / Property companyt



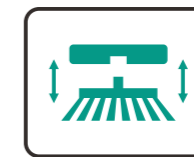
12 CORE ADVANTAGES
 Scrubber machine makes cleaning easier
 Keep improving and focus on product development



Floating ball induction device



Wash, brush and inhale in one



Electrical BRS system (brush release system)



Non marking skid resistant tire



Self adaptive suction grill



Safe energy



One touch



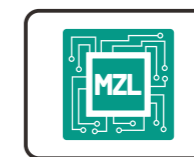
Intelligent control



Large water tank



Top after-sales service



PCB battery control



2 year warranty

Small Walk-Behind Floor Scrubber

F30

Main functions and features

- Suitable for aisles such as offices, office buildings, supermarkets, etc.;
- According to the roughness of the ground, the water volume can be automatically adjusted;
- 170-degree folding handles to satisfy people of all heights;
- The turning radius can be flexibly adjusted, and the corner area can be easily cleaned;
- One-click start;The height of the brush plate can be adjusted to reduce resistance;
- ECO energy saving mode,The endurance timecan reach 5.5h.

170 degree adjustable armrest turning, cleaning more flexible corner



F30 Main technical specifications

Item	Name	Parameter
1	Scrubbing width	430 mm
2	Brush pressure	17/23 Kg
3	Brush speed	155 rpm
4	Squeegee width	620 mm
5	Clean water tank capacity	27 L
6	Sewage tank capacity	30 L
7	Theoretical maximum work efficiency	1500 m ² /h
8	Working voltage	DC 24V
9	Max working duration	5.5h@ECO Mode
10		67 dB
11	Digital water control	yes
12	BRS system	yes
13	Battery type	12V*2-85AH (Optional)
14	Brush motor	350 W
15	Suction motor	310 W
16	Product size	900*650*700/1270 mm
17	Net weight	116 Kg



Detachable water tank
Convenient for cleaning, loading and unloading



Intelligent control panel
The operation panel is simple and easy to understand and easy to use



Adjustable brush height
Easy implementation
Comfortable operation and labor saving

Application Places



We reserve the right to modify the above configuration. The specific configuration is subject to the actual object

Walk-Behind Floor Scrubber F50

Main functions and features

- Work efficiency up to 2000m²/h;
- Mechanical design / Save time and effort, make it easier to push;
- Failure reminder / automatic shutdown to avoid accidents;
- Automatic water stop / solenoid valve controls the water flow to ensure that the water will be cut off when the brush stops;
- One-click start;ECO energy saving mode,The endurance time can reach 5h.
- Automatic up and down brushing;Intelligent operation, no need to replace manually.



Mechanical grip
Easy implementation
Comfortable operation and labor saving



Intelligent control panel
The operation panel is simple and easy to understand and easy to use



Wash, Scrub and Vacuum in one pass
Decontamination second dry no mark
For different venues
Fast cleaning and drying

F50 Main technical specifications

Item	Name	Parameter
1	Cleaning width	530 mm
2	Squeegee width	800 mm
3	Clean water tank capacity	90 L
4	Recovery tank capacity	50 L
5	Rotation method of brush plate	Aluminum gear reduction
6	Brush speed	155 rpm
7	Main brush motor	550 W
8	Water suction motor	310 W
9	Theoretical efficiency	1855 m ² /h
10	using electric	DC 24V
11	Battery configuration	12V*2-85AH(Optional)
12	Max working Duration	5h@ECO Mode
13	Brush pressure	25 Kg
14	dB	67 dB
15	One key control	Yes
16	Level Control	Yes
17	BRS system	Yes
18	Electronic control water	Yes
19	Product size	1280x800x1000 mm
20	Net weight	137.5 Kg

We reserve the right to modify the above configuration. The specific configuration is subject to the actual object



Application Places

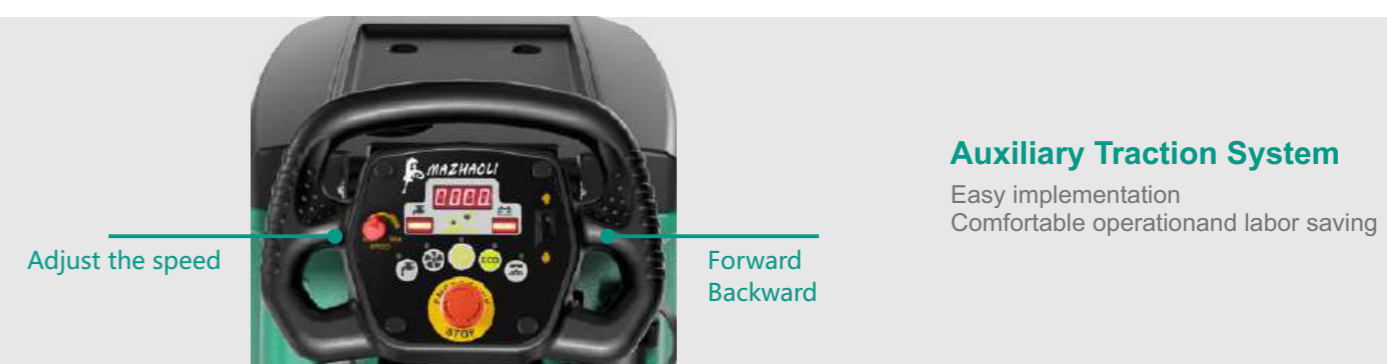


85Ah Batteries (Optional) 22" Brush 21" Scouring pad 21" Pad/holder 24V-15A Charger 800mm Squeegee Import Rubber strips

Walk-Behind Floor Scrubber F60-A

Main functions and features

- Work efficiency up to 3000m²/h;
- Auxiliary traction system / auxiliary power, easier to push;
- Failure reminder / automatic shutdown to avoid accidents;
- Automatic water stop / solenoid valve controls the water flow to ensure that the water will be cut off when the brush stops;
- One-click start;ECO energy saving mode,The endurance time can reach 5.5h.
- Automatic up and down brushing;Intelligent operation, no need to replace manually.



F60-A Main technical specifications

Item	Name	Parameter
1	Cleaning width	530 mm
2	Squeegee width	800 mm
3	Clean water tank capacity	60 L
4	Recovery tank capacity	65 L
5	Rotation method of brush plate	Aluminum gear reduction
6	Brush speed	175 rpm
7	Main brush motor	550 W
8	Water suction motor	400 W
9	Theoretical efficiency	2915 m ² /h
10	Max working Duration	5h@ECO Mode
11	using electric	DC 24V
12	Battery configuration	12V*2-100AH (Optional)
13	Brush pressure	25Kg
14	dB	67 dB
15	BRS system	Yes
16	One key control	Yes
17	Level Control	Yes
18	Electronic control water	Yes
19	Product size	1450x800x1100 mm
20	Net weight	165 Kg
21	Traction motor	90 W
22	Propulsion speed adjustment	Yes

We reserve the right to modify the above configuration. The specific configuration is subject to the actual object



Application Places



100Ah Batteries (Optional) 21" Brush 20" Scouring pad 20" Pad/holder 800mm Squeegee Import Rubber strips

Walk-Behind Floor Scrubber F60-B

Main functions and features

- Work efficiency up to 2000m²/h;
- Mechanical design / Save time and effort, make it easier to push;
- Failure reminder / automatic shutdown to avoid accidents;
- Automatic water stop / solenoid valve controls the water flow to ensure that the water will be cut off when the brush stops;
- One-click start;ECO energy saving mode,The endurance time can reach 5.5h.
- Automatic up and down brushing;Intelligent operation, no need to replace manually.



Mechanical grip
Easy implementation
Comfortable operation and labor saving



Intelligent control panel
The operation panel is simple and easy to understand and easy to use



Wash, Scrub and Vacuum in one pass
Decontamination second dry no mark
For different venues
Fast cleaning and drying

F60-B Main technical specifications

Item	Name	Parameter
1	Cleaning width	530 mm
2	Squeegee width	800 mm
3	Clean water tank capacity	60 L
4	Recovery tank capacity	65 L
5	Rotation method of brush plate	Aluminum gear reduction
6	Brush speed	175 rpm
7	Main brush motor	550 W
8	Water suction motor	400 W
9	Theoretical efficiency	1850 m ² /h
10	Max working Duration	5.5h@ECO Mode
11	Using electric	DC 24V
12	Battery configuration	12V*2-100AH (Optional)
13	Brush pressure	25Kg
14	dB	67dB
15	BRS system	Yes
16	One key control	Yes
17	Level Control	Yes
18	Electronic control water	Yes
19	Product size	1450x800x1100 mm
20	Net weight	165 Kg

We reserve the right to modify the above configuration. The specific configuration is subject to the actual object



Application Places



100Ah Batteries (Optional)



21" Brush



20" Scouring pad



20" Pad/holder



800mm Squeegee



Import Rubber strips

Ride-on floor scrubber F80

Main functions and features

- * Efficient work / Work efficiency up to 4000m²/h;
- * Convenient operation / One-click start, adapt to the general population;
- * ECO mode / Single charge working width up to 28000m²;
- * Failure reminder / Automatic shutdown to avoid accidents;
- * Equipped with high-power LED lamp for night operation as standard
- * With advanced automobile concept and humanized ergonomic design, the steering wheel imitates the automobile steering wheel, which is easy to operate, easy to learn and understand;



Large water intake design
Convenient and fast water injection



Intelligent control panel
The operation panel is simple and easy to understand and easy to use



Wash, Scrub and Vacuum in one pass
Decontamination second dry no mark
For different venues
Fast cleaning and drying

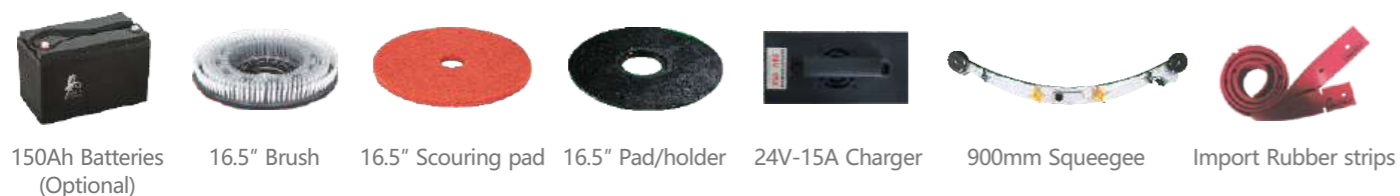
F80 Main technical specifications

Item	Name	Parameter
1	The electronic brake	Standard
2	One-click start	Standard
3	Squeegee width	900 mm
4	Brush tray diameter	330 mm*2
5	Theoretical efficiency	4000 m ² /h
6	Battery type	8V*3-150AH (Optional)
7	Brush motor	400 W*2
8	Suction motor	550 W
9	Brush speed	150rpm
10	Max Working Duration	4 h
11	BRS system	1/2 BRS
12	Sewage tank capacity	80 L
13	Clean water tank capacity	80 L
14	dB	73 dB
15	Product size	1320*900*1250 mm
16	Net weight	210 Kg

We reserve the right to modify the above configuration. The specific configuration is subject to the actual object



Application Places



150Ah Batteries (Optional) 16.5" Brush 16.5" Scouring pad 16.5" Pad/holder 24V-15A Charger 900mm Squeegee Import Rubber strips

Ride-on floor scrubber F110-A

Main functions and features



F110-A Main technical specifications

Item	Name	Parameter
1	The seat switch	Standard
2	The electronic brake	Standard
3	BRS system	Standard
4	dB	67 dB
5	Brush tray diameter	410*2 mm
6	Brush speed	175 rpm
7	Wheel base	740 mm
8	Squeegee width	1050mm
9	Clean water tank capacity	110 L
10	Sewage tank capacity	110 L
11	Theoretical efficiency	5100 m ² /h
12	Battery type	6*4-240AH (Optional)
13	Max Working Duration	6.5h@ECO Mode
14	Brush motor	550W*2
15	Suction motor	600W
16	Product size	1520*1050*1270 mm
17	Net weight	441 Kg
18	Atomization voltage	24 V
19	Atomization speed	1500 ml/h
20	electric current	6 A
21	Atomization water tank capacity	8 L
22	Atomization water source	Pure water
23	Precautions	It is strictly forbidden to use flammable, explosive, and toxic substances (alcohol can not be used, and diluted disinfectant water can be used)

We reserve the right to modify the above configuration. The specific configuration is subject to the actual object



Application Places



240Ah Batteries (Optional) 16.5" Brush 16.5" Scouring pad 16.5" Pad/holder 24V-30A Charger 1050mm Squeegee Import Rubber strips

Ride-on floor scrubber F110-B

Main functions and features

- Efficient work / Work efficiency up to 5500m²/h;
- Convenient operation / One-click start, adapt to the general population;
- Automatic deceleration when turning / Speed limit function when turning, suitable for novice operation;
- Local pressurization / According to the ground conditions, local pressurization and cleaning agent can be added;
- ECO mode / Single charge working width up to 33000m²;
- Failure reminder / Automatic shutdown to avoid accidents;
- Linkage function/ Accelerator, brake, and induction seat are integrated to prevent novices from making mistakes.;
- Induction seat, when the driver leaves the seat, the machine will stop moving forward
- Automatic fault detection and alarm function, equipped with high-power LED lamp for night operation as standard



Cleaner regulator
Automatic control of cleaning dose is more scientific and practical



Intelligent control panel
The operation panel is simple and easy to understand and easy to use



Seat sensor
Humanized design, more security

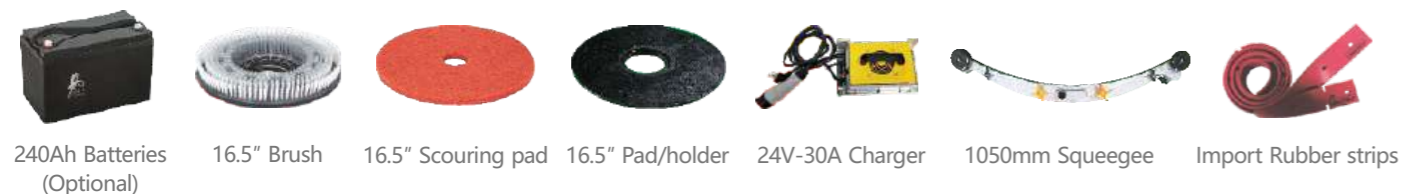
F110-B Main technical specifications

Item	Name	Parameter
1	The seat switch	Standard
2	The electronic brake	Standard
3	BRS system	Standard
4	dB	67 dB
5	Brush tray diameter	410*2 mm
6	Brush speed	175 rpm
7	Wheel base	740 mm
8	Squeegee width	1050 mm
9	Clean water tank capacity	110 L
10	Sewage tank capacity	110 L
11	Theoretical efficiency	5100 m ² /h
12	Battery type	6*4-240AH (Optional)
13	Max Working Duration	6.5h@ECO Mode
14	Brush motor	550W*2
15	Suction motor	600W
16	Product size	1520*1050*1270 mm
17	Net weight	441 Kg

We reserve the right to modify the above configuration. The specific configuration is subject to the actual object



Application Places



240Ah Batteries (Optional) 16.5" Brush 16.5" Scouring pad 16.5" Pad/holder 24V-30A Charger 1050mm Squeegee Import Rubber strips

Ride-on Sweeper

M2



Main functions and features

- Efficient work / work efficiency reaches 9600m²/h;
- Front wheel shock absorber design / effectively protect the machine, increase safety and comfort;
- Three-wheeled chassis design / small turning radius, easy to clean narrow sites;
- The chassis is 80mm from the ground / Speed bumps and uneven roads are not obstacles;
- Failure reminder / Automatic shutdown to avoid accidents;
- Automatic fault detection and alarm function, equipped with high-power LED lamp for night operation as standard;
- Water spray function / dust removal, cooling, protection of the road.



The revolutionary innovative design
makes the machine stand upright on the ground easily
which is convenient for daily



One click operation / quick start time and effort saving / easy driving



Rear super large capacity dustbin
Easy to disassemble and improve efficiency



Drum filter, Ingenious air duct layout,
effective dust control

Application Places



Batteries



Sweeping brush



Roller brush



Power cord

M2 Main technical specifications

Item	Name	Parameter
1	Sweeping width	1400 mm
2	Cleaning efficiency	≥ 6800 m ² /h
3	Bin capacity	150 L
4	Tank capacity	Optional (18L)
5	Filter area of filter core	8 m ²
6	Main brush size	700 mm
7	Side brush size	500 mm
8	Ground clearance	80 mm
9	Continuous working hours	4-6 h
10	Maximum driving speed	8 Km/h
11	Sweeping speed	0-6 Km/h
12	Climbing ability	<35°
13	Turning radius	1200 mm
14	Driving power	1200 W
15	Operating power	1030 W
16	Equipped with batteries	12V*3.(120ah Battery)
17	Total weight	600 Kg
18	Product size	1550*1400*1800 mm

We reserve the right to modify the above configuration. The specific configuration is subject to the actual object

Ride-on Sweeper

M6

Main functions and features



- Independent control panel / seat and steering wheel to the right for easy operation, better vision
- Front wheel shock absorber design / effectively protect the machine, increase safety and comfort
- Independent control / independent control of the side brush fan to meet the requirements of all-weather work
- The distance between the chassis and the ground is 100mm / Speed bumps and uneven roads are not obstacles
- Double vacuum inner core design / remarkable effect, solving the difficulties of the same industry
- Automatic dust vibration technology / integration of main brush and side brush, easy to operate
- High battery life / 8*6V-200Ah maintenance-free batteries



Double dust suction inner core design

Excellent dust collection and dust control capabilities, with a filtration area of 10 square meters



One click operation / quick start time and effort saving / easy driving



Rear super large capacity dustbin
Easy to disassemble and improve efficiency



The side brush adopts anti-collision design to protect the machine more effectively.

Application Places



Batteries



Sweeping brush



Roller brush



Power cord

M6 Main technical specifications

Item	Name	Parameter
1	Sweeping width	1980 mm
2	Cleaning efficiency	≥13900 m ² /h
3	Bin capacity	230 L
4	Tank capacity	80 L
5	Filter area of filter core	8 m ²
6	Main brush size	800 mm
7	Side brush size	500 mm
8	Ground clearance	100 mm
9	Continuous working hours	8-10 h
10	Maximum driving speed	8 Km/h
11	Sweeping speed	0-6 Km/h
12	Climbing ability	<35°
13	Turning radius	2000 mm
14	Driving power	3700 W
15	Operating power	1256 W
16	Equipped with batteries	6V*8.(200ah Battery)
17	Total weight	1100 Kg
18	Product size	2300*1900*1900 mm

We reserve the right to modify the above configuration. The specific configuration is subject to the actual object

Архангельск (8182)63-90-72
Астана (7172)727-132
Астрахань (8512)99-46-04
Барнаул (3852)73-04-60
Белгород (4722)40-23-64
Брянск (4832)59-03-52
Владивосток (423)249-28-31
Волгоград (844)278-03-48
Вологда (8172)26-41-59
Воронеж (473)204-51-73
Екатеринбург (343)384-55-89
Иваново (4932)77-34-06

Ижевск (3412)26-03-58
Иркутск (395)279-98-46
Казань (843)206-01-48
Калининград (4012)72-03-81
Калуга (4842)92-23-67
Кемерово (3842)65-04-62
Киров (8332)68-02-04
Краснодар (861)203-40-90
Красноярск (391)204-63-61
Курск (4712)77-13-04
Липецк (4742)52-20-81
Киргизия (996)312-96-26-47

Магнитогорск (3519)55-03-13
Москва (495)268-04-70
Мурманск (8152)59-64-93
Набережные Челны (8552)20-53-41
Нижний Новгород (831)429-08-12
Новокузнецк (3843)20-46-81
Новосибирск (383)227-86-73
Омск (3812)21-46-40
Орел (4862)44-53-42
Оренбург (3532)37-68-04
Пенза (8412)22-31-16
Россия (495)268-04-70

Пермь (342)205-81-47
Ростов-на-Дону (863)308-18-15
Рязань (4912)46-61-64
Самара (846)206-03-16
Санкт-Петербург (812)309-46-40
Саратов (845)249-38-78
Севастополь (8692)22-31-93
Симферополь (3652)67-13-56
Смоленск (4812)29-41-54
Сочи (862)225-72-31
Ставрополь (8652)20-65-13
Казахстан (772)734-952-31

Сургут (3462)77-98-35
Тверь (4822)63-31-35
Томск (3822)98-41-53
Тула (4872)74-02-29
Тюмень (3452)66-21-18
Ульяновск (8422)24-23-59
Уфа (347)229-48-12
Хабаровск (4212)92-98-04
Челябинск (351)202-03-61
Череповец (8202)49-02-64
Ярославль (4852)69-52-93